
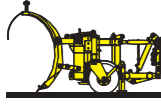



Technical data RS 400^{7.5}

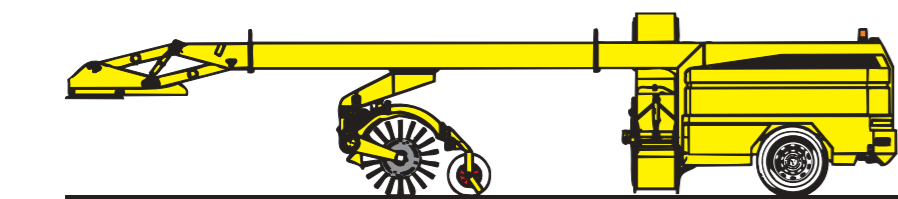
A complete Runway Sweeper unit consists of Snow plow, Truck and Sweeper!

	Total dimensions	Total length	: 22 199 mm / 72,8 ft
		Transport width	: 7 181 mm / 23,6 ft
		Working width	: 6 811 mm / 22,3 ft
		Height	: 3 419 mm / 11,2 ft
		Weight	: 26 000 kg / 57 200 lb

	Snow plow	Working width	: 6 811 mm / 22,3 ft)
		Max. width	: 8 608 mm / 28,2 ft
		No. of elements	: 9 pc.
		Blade width	: 915 mm / 3 ft
		Blade height	: 1 200 mm / 3,9 ft
		Weight, total	: 1 930 kg / 4 250 lb

	Truck	Make	: Mercedes-Benz
		Type	: Actros 2040 AS
		Diesel engine	: MB OM 501 LA
		Output	: 390 hp at 1800 rpm
		Transmission	: Automatic
		Axles	: 4 wheel drive, 4x4
		Max. speed	: 85 km/h (53 mph)
		Weight	: 8 570 kg / 18 854 lb

Sweeper	See technical data below
----------------	--------------------------



Dimensions		Brush system	
Length	: 13 346 mm / 43,8 ft	Brush core	: SIB cassette brush
Transport width	: 2 921 mm / 9,58 ft	Diameter	: Ø 1 170 mm - 770 mm / 3,83 ft - 2,53 ft
Working width	: 5 293 mm / 17,4 ft	Length	: 6 240 mm / 20,5 ft
Gross weight	: 15 500 kg / 34 200 lb	Tufting	: Steel or Poly
Height	: 3 024 mm / 9,92 ft	Brush speed	: 0 - 720 rpm
Tire dimension	: 11.75 x 22,5	Electrical system	
Wheel rim dimension	: 9 x 22,5	Voltage	: 24 Volt
Hydraulic oil tank	: 100 l / 26,4 gal	Emergency stops	: 4 pc.
Diesel tank	: 400 l / 105 gal		

Diesel engine		Working speed	
Type	: MB OM 501 LA	Working speed, max.	: 65 km/h / 40 mph
Cylinders	: V6	Working speed, pract.	: 30 - 45 km/h / 19 - 28 mph
Power	: 315 kW	Clearing capacity	: Up to 325 000 m ³ h / 3 500 000 ft ³
Speed (working)	: 2 000 rpm		
Torque	: 2 000 Nm/1 080 rpm		

Centrifugal blower	
Type	: Radial
Volume	: 40 000 m ³ /h
Airspeed	: 140 m/s / 317 mph
Air tunnel	: In front of rear axle

Options RS 400^{7.5}

Choose what options you would prefer!



Nose wheel, upgrade.		Engine heater, 220 Volt. NATO standard socket. Battery charger, 220 Volt.	
Adjustable fifth wheel adapter, upgrade.		Rear view monitor.	
Central lubrication system.		Rear wheel steering.	
22 row brush axle, upgrade.		Interface snow plow functions. Makes it possible to co-ordinate the movements of the snow plow together with the sweeper.	
Automatic brush adjustment.		Anti corrosion treatment (TECTYL).	

Manufactured by:

ØVERAASEN

ØVERAASEN AS
Roald Amundsensvei 1
NO-2810 Gjøvik
Norway

Tel.: + 47 61 14 60 00
Fax: + 47 61 14 60 01
e-mail: sales@overaasen.no
http://www.overaasen.no

Distributed in the USA by:

MYSLIK

MYSLIK, INC.
22751 Sunrise Drive
Morrison, Colorado 80465
United States of America
Tel.: + 1 303.697.9692
Fax: + 1 303.697.9693
e-mail: bmyslik@juno.com

ØVERAASEN RUNWAY SWEEPER RS 400^{7.5}



Experience the future
in airport snowclearing...



...THE SNOW PROFESSIONALS!

RUNWAY SWEEPER RS 400^{7.5}

...Setting the standard!



In General

The RS series is one of the most modern runway sweepers on the market today. The modular RS series boasts a large brush diameter and sleek, elegant construction.

The Jumbo-sized runway sweeper RS 400 is a standard module in Øveraasen's Modular System of which more than 150 units are delivered worldwide. With its impressive 5,5 meter (18 foot) clearing width, it represents a lower total investment compared to conventional equipment:

- Snowclearing can be achieved with fewer machines.
- Less manpower is required.
- Less garage space is needed.

Øveraasen RS 400 is a major time-saver for airports with busy schedules:

- 1 170 mm (46 inch) brush diameter.
- 5,5 meter (18 foot) working width.
- 65 km/h (40 mph) working speed.
- Snowclearing easier to organize with fewer machines and less manpower.
- Proven reliability.

The Mercedes-Benz truck provides a new world of comfort for operators. Heated comfort seats, electrically adjustable and heated mirrors, heated wipers and windshields, rear view monitor, electronic power shift (or Allison transmission) are examples of qualities that can be offered.

The easy-to-use computerized control system ensures a smooth and co-ordinated maneuver of the snow plow and sweeper based on hydraulic cylinders. Repositioning the machine no longer requires inductive switches or sensors that can corrode or malfunction when exposed to chemical-laden snow ice, and water.

Check out the advantages!

ØVERAASEN

46-inch brush diameter

High airblower capacity

Proven reliability

Optimal snow removal quality

Higher working speed

The element snow plow is specially designed for use in combination with runway sweepers at airports. The plow employ a strong versatile reversible snowblade consisting of 9 pc. individual elements. This means the plow follows the surface very close.



No critical micro switches. Hydraulic cylinders have no middle position. One cylinder per movement.



Optimal snow removal quality
- Automatically controlled brush speed (revolution) in relation to forward speed and current brush diameter.
- Automatically adjustment of brush pattern. Option.
- Long lifetime of brushes.



Brush diameter increased from 915 to 1 170 mm / 36 inch to 46 inch.
- Same peripheral (tip) speed at lower revolutions and a flatter trajectory of thrown snow.
- Markedly higher working speed.
- Achievement of desired clearing speed with all brush diameters.



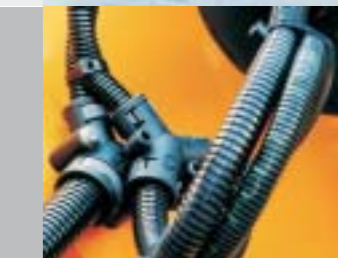
Mechanical floating function allows the brush to follow the ground surface well, with good level adjustment (brush pattern), even at high speeds.
Reacts instantly to uneven surfaces.



Engine compartment can be tilted totally backwards (electrically or by hand). Easy access to engine compartment for service and daily inspections. Free access to electrical installations, diesel engine, hydraulic components etc.



Durable high-tolerance electrical system. Cables and connections are safely protected against water, chemicals and corrosion.



Remote control panel for manual brush adjustment.



Easy-to-use control panel located in the drivers cabin.



Rust resistant hydraulic connections and fittings designed especially as protection against acetates and other chemicals.



All bolts, screws and nuts in rust resistant material. Protected against acetates and other de-icing agents.



All steel parts are sandblasted before a 150my "offshore" paint is applied. Sandblasting is a must to avoid rust and loose paint.

